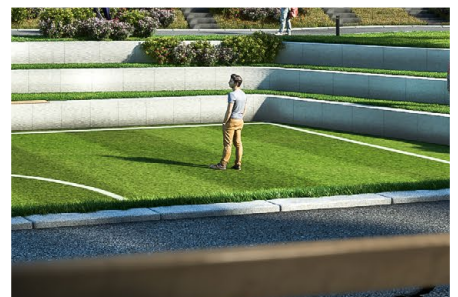


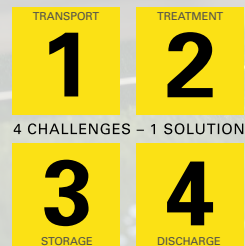
## Carlsberg Byen, Copenhagen

### Stormwater retention with Rigofill ST and pretreatment using SediPipe XL plus



#### Products:

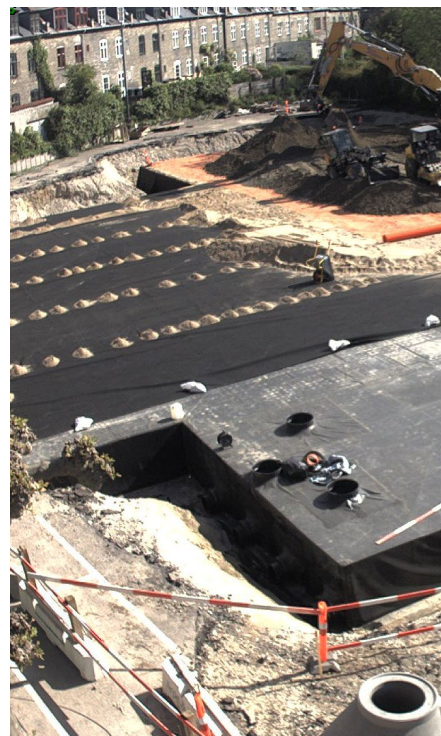
- 3,700 Rigofill ST
- 5 QuadroControl 2
- 1 SediPipe XL plus 600/24



**DRAINAGE SYSTEMS**  
ELECTRICAL SYSTEMS  
BUILDING TECHNOLOGY  
INDUSTRIAL PRODUCTS



# Carlsberg Byen, Copenhagen



The Carlsberg Byen city district has been developed on the former brewery premises in the centre of Copenhagen. Flawless architectural design makes historic and modern buildings merge into one harmonious unity. An urban area with apartments, offices, manifold shopping facilities, sports and cultural centres emerges in the centre of Copenhagen.

In the course of this redesigning, appropriately adjusted drainage concept for the accumulating surface water was required. So as not to overburden the existing sewer systems, stormwater needs to be temporarily stored in a retention basin to be subsequently discharged in a restricted manner. Underground retention was opted for to preserve the scarce recreation areas available. The Rigofill ST storage blocks with their storage capacity of 96 % offer the ideal solution.

The modular design made possible with them allows easy adjustment of the basin geometry to the surface available. High load capacity, simplicity of installation that eventually reduces construction time, as well as inspectability of the basin made the decision to go with the Rigofill ST storage system an easy one.

To protect the storage basin from soiling, a SediPipe XL plus was installed upstream to ideally support the processes of sedimentation by means of its unique flow separator. This way, the required oil retention in case of spills is achieved, which has been confirmed by testing according to EN858.

All in all, this stormwater retention concept is an ecologically sustainable and safe solution, and thus fits in perfectly with the philosophy of the "new" city quarter.

## Facts & figures

- Net storage volume of the retention basin of approx. 1,500 m<sup>3</sup>  
Sealing with EPDM geomembrane
- Stormwater treatment and removal of sediment and oil in case of spills; separation performance in accordance with EN858, class 1
- Implementation in June 2017

## Customer/builder:

Carlsberg Byen P/S  
Ny Carlsberg Vej 140  
1799 København V

## Planning:

ARPE & KJELDSTHOLM A/S

## Building company:

Entreprenør  
Thomas Jorgensen